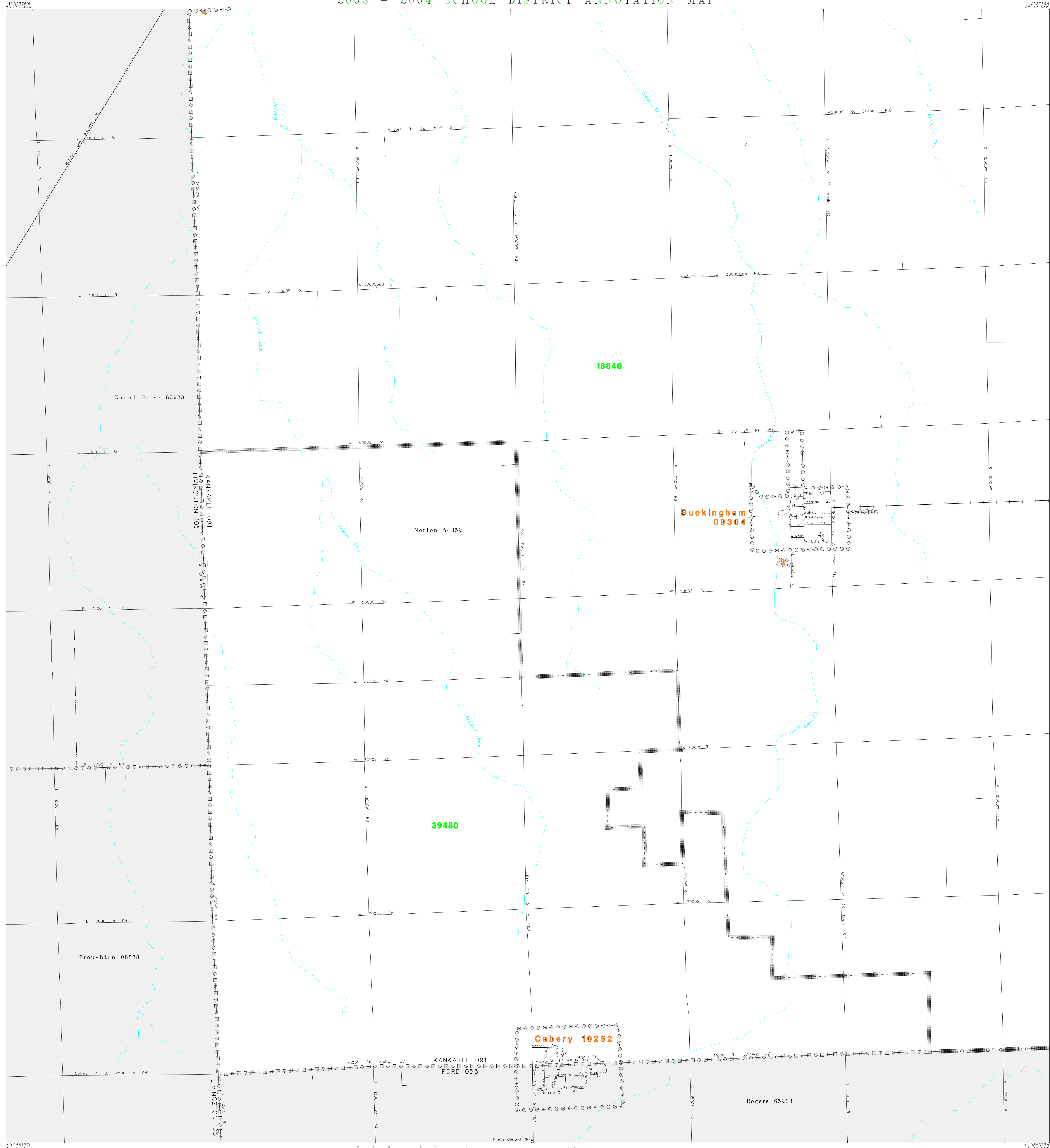


2003 - 2004 SCHOOL DISTRICT ANNOTATION MAP



SYMBOL DESCRIPTION	SYMBOL	NAME STYLE
INTERNATIONAL	☆☆☆☆☆☆	INTERNATIONAL
AMERICAN INDIAN RESERVATION	☆☆☆☆☆☆	AMERICAN INDIAN RESERVATION
ALASKA NATIVE REGIONAL CORPORATION	☆☆☆☆☆☆	ALASKA NATIVE REGIONAL CORPORATION
STATE ¹	□□□□□□	STATE
COUNTY ¹	□□□□□□	COUNTY
MINOR CIVIL DIVISION ²	□□□□□□	MINOR CIVIL DIVISION
Incorporated Place	○	Incorporated Place
Unified School District	○	Unified School District
Secondary School District	○	Secondary School District
Elementary School District	○	Elementary School District
Interstate and Limited Access Highway	—	Interstate and Limited Access Highway
US Highway or Secondary Road	—	U.S. Highway or Secondary Road
County or Connecting Road	—	County or Connecting Road
Neighborhood Road or City Street	—	Neighborhood Road or City Street
Railroad	—	Railroad
Perennial Stream/Shoreline	—	Perennial Stream/Shoreline
Intermittent Stream/Shoreline	—	Intermittent Stream/Shoreline
Pipeline or Powerline	—	Pipeline or Powerline
Property Line	—	Property Line
River, Lake, or Other Water	—	River, Lake, or Other Water
Military	—	Military
Park/National Park	—	Park/National Park
INSBT A	—	INSBT A
Outside Jurisdiction	—	Outside Jurisdiction

School Districts

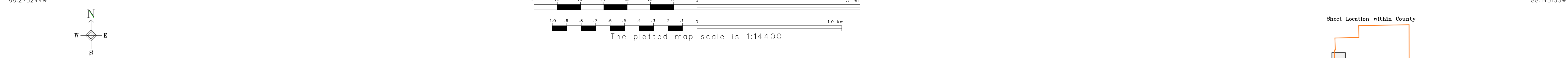
Code	Name
18840	HERSCHER COMMUNITY UNIT SCHOOL DISTRICT 2
39480	TRI POINT COMMUNITY UNIT SCHOOL DISTRICT 6-J

KEY TO LINEAR FEATURE NAMES

1 E Main (Cohley 37)
2 Turner St

KEY TO GEOGRAPHIC NAMES

3 Buckingham 09304 4 Reddick 63056



ST: Illinois (17)
COU: Kankakee County (091)

SHEET 13 OF 18 PARENT SHEETS

(SDA03) 0241709101300000000