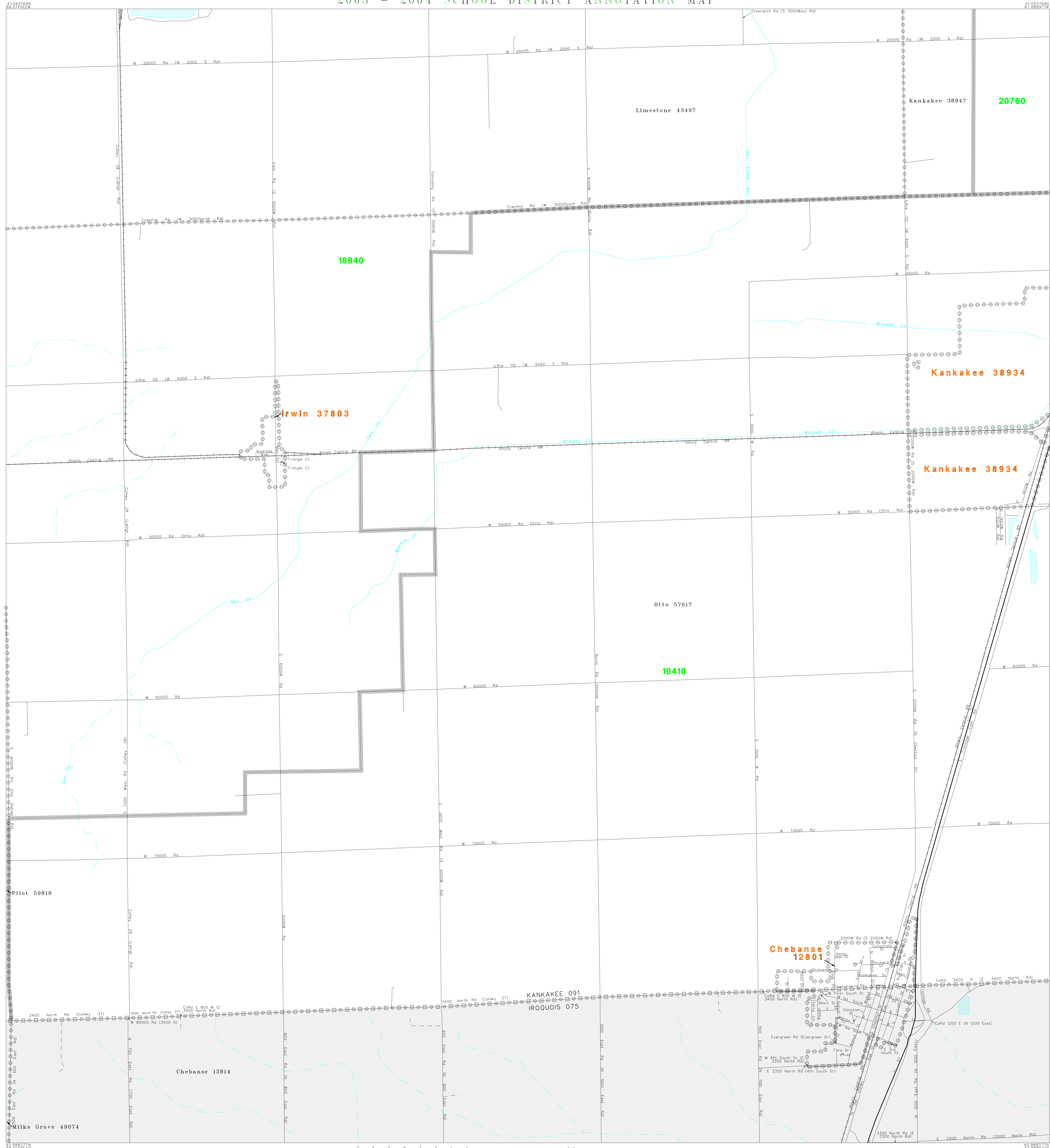


2003 - 2004 SCHOOL DISTRICT ANNOTATION MAP



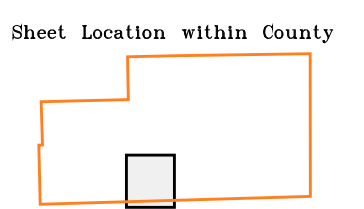
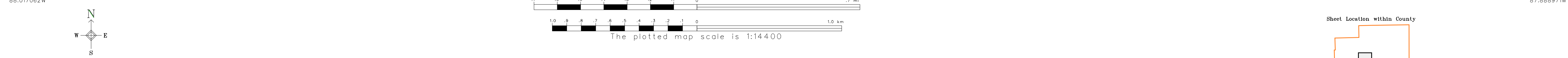
SYMBOL DESCRIPTION		SYMBOL		NAME STYLE	
INTERNATIONAL	☆☆☆☆☆☆☆☆	☆☆☆☆☆☆☆☆	INTERNATIONAL	INTERNATIONAL	
AMERICAN INDIAN RESERVATION	☆☆☆☆☆☆☆☆	☆☆☆☆☆☆☆☆	AMERICAN INDIAN RESERVATION	AMERICAN INDIAN RESERVATION	
ALASKA NATIVE REGIONAL CORPORATION	◇◇◇◇◇◇◇◇	◇◇◇◇◇◇◇◇	ALASKA NATIVE REGIONAL CORPORATION	ALASKA NATIVE REGIONAL CORPORATION	
STATE <sup>1</sup>	□□□□□□□□	□□□□□□□□	STATE	STATE	
COUNTY <sup>1</sup>	□□□□□□□□	□□□□□□□□	COUNTY	COUNTY	
MINOR CIVIL DIVISION <sup>2</sup>	○ ○ ○ ○ ○ ○ ○ ○	○ ○ ○ ○ ○ ○ ○ ○	MINOR CIVIL DIVISION	MINOR CIVIL DIVISION	
Incorporated Place	○ ○ ○ ○ ○ ○ ○ ○	○ ○ ○ ○ ○ ○ ○ ○	<b>Incorporated Place</b>	<b>Incorporated Place</b>	
Unified School District	▬▬▬▬▬▬▬▬	▬▬▬▬▬▬▬▬	<b>Unified School District</b>	<b>Unified School District</b>	
Secondary School District	▬▬▬▬▬▬▬▬	▬▬▬▬▬▬▬▬	<b>Secondary School District</b>	<b>Secondary School District</b>	
Elementary School District	▬▬▬▬▬▬▬▬	▬▬▬▬▬▬▬▬	<b>Elementary School District</b>	<b>Elementary School District</b>	
Interstate and Limited Access Highway	▬▬▬▬▬▬▬▬	▬▬▬▬▬▬▬▬	Interstate and Limited Access Highway	Interstate and Limited Access Highway	
US Highway or Secondary Road	▬▬▬▬▬▬▬▬	▬▬▬▬▬▬▬▬	US Highway or Secondary Road	US Highway or Secondary Road	
County or Connecting Road	▬▬▬▬▬▬▬▬	▬▬▬▬▬▬▬▬	County or Connecting Road	County or Connecting Road	
Neighborhood Road or City Street	▬▬▬▬▬▬▬▬	▬▬▬▬▬▬▬▬	Neighborhood Road or City Street	Neighborhood Road or City Street	
Railroad	▬▬▬▬▬▬▬▬	▬▬▬▬▬▬▬▬	Railroad	Railroad	
Perennial Stream/Shoreline	▬▬▬▬▬▬▬▬	▬▬▬▬▬▬▬▬	Perennial Stream/Shoreline	Perennial Stream/Shoreline	
Intermittent Stream/Shoreline	▬▬▬▬▬▬▬▬	▬▬▬▬▬▬▬▬	Intermittent Stream/Shoreline	Intermittent Stream/Shoreline	
Pipeline or Powerline	▬▬▬▬▬▬▬▬	▬▬▬▬▬▬▬▬	Pipeline or Powerline	Pipeline or Powerline	
Property Line	▬▬▬▬▬▬▬▬	▬▬▬▬▬▬▬▬	Property Line	Property Line	
River, Lake, or Other Water	▬▬▬▬▬▬▬▬	▬▬▬▬▬▬▬▬	River, Lake, or Other Water	River, Lake, or Other Water	
Military	▬▬▬▬▬▬▬▬	▬▬▬▬▬▬▬▬	Military	Military	
Park/National Park	▬▬▬▬▬▬▬▬	▬▬▬▬▬▬▬▬	Park/National Park	Park/National Park	
INSET A	▬▬▬▬▬▬▬▬	▬▬▬▬▬▬▬▬	INSET A	INSET A	
Outside Jurisdiction	▬▬▬▬▬▬▬▬	▬▬▬▬▬▬▬▬	Outside Jurisdiction	Outside Jurisdiction	

**School Districts**

Code	Name
10410	CENTRAL COMMUNITY UNIT SCHOOL DISTRICT 4
18840	HERSCHER COMMUNITY UNIT SCHOOL DISTRICT 2
20760	KANKAKEE SCHOOL DISTRICT 111

**KEY TO LINEAR FEATURE NAMES**

1. Co Rd 3300 N (E 3300 North Rd)	4. 2nd North St	7. S Walnut St	10. First North St	13. S 2000W Rd (N Chestnut St)
2. N 2nd St	5. S 1st St	8. E 2nd South St	11. George St	
3. S 2nd St (W 2nd South St)	6. W First South St	9. W 2nd South St	12. Mansfield Ct	



Map to adjacent sheets

8	9	10
14	15	16

ST: Illinois (17)  
 COU: Kankakee County (091)

SHEET 15 OF 18 PARENT SHEETS  
 (SDA03) 0241709101500000000