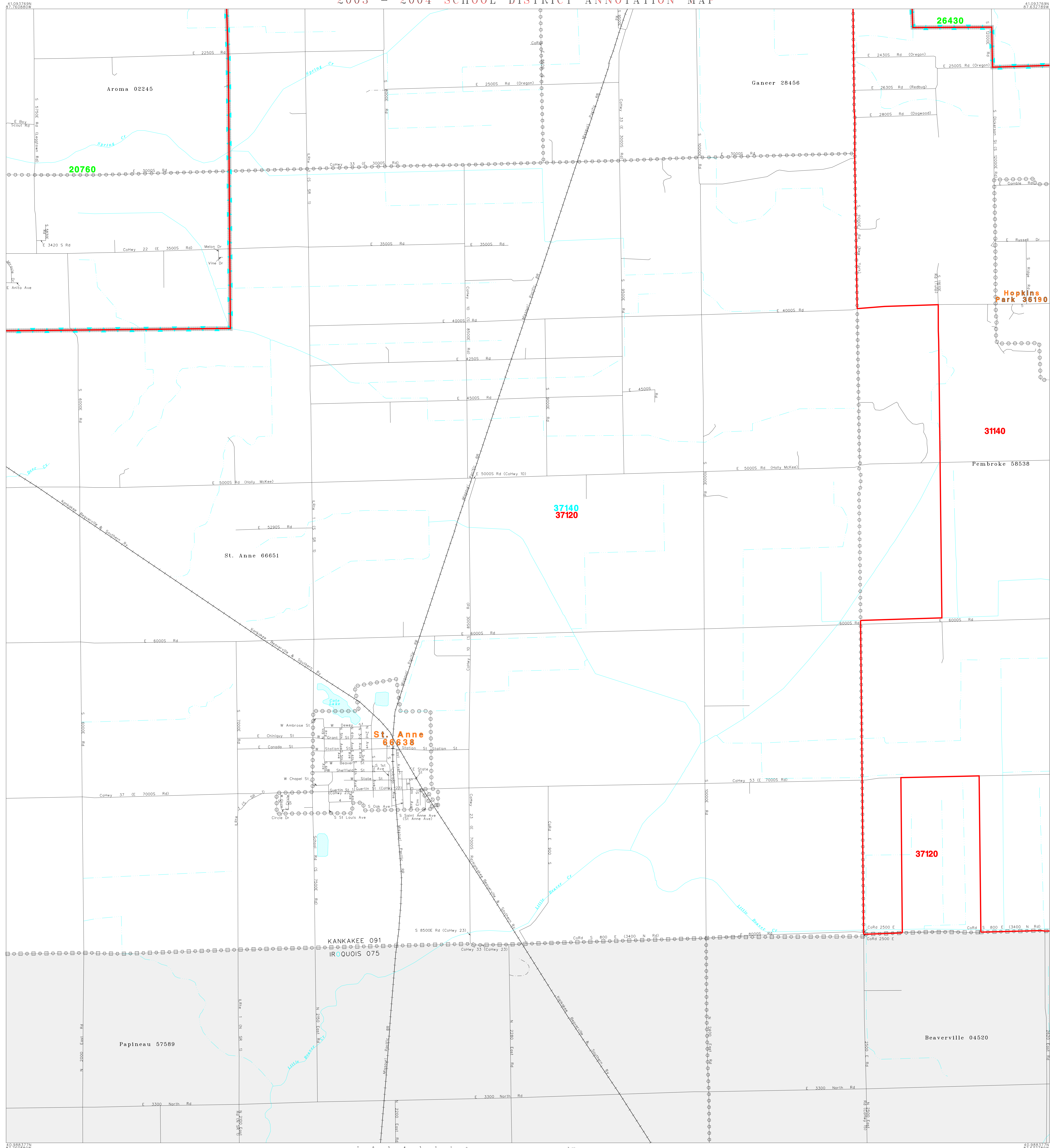


2003 - 2004 SCHOOL DISTRICT ANNOTATION MAP



LEGEND

SYMBOL DESCRIPTION	SYMBOL	NAME STYLE
INTERNATIONAL	☆☆☆☆☆☆	INTERNATIONAL
AMERICAN INDIAN RESERVATION	☆☆☆☆☆☆	AMERICAN INDIAN RESERVATION
ALASKA NATIVE REGIONAL CORPORATION	◇◇◇◇◇◇	ALASKA NATIVE REGIONAL CORPORATION
STATE ¹	◇◇◇◇◇◇	STATE
COUNTY ¹	□□□□□□	COUNTY
MINOR CIVIL DIVISION ²	○	MINOR CIVIL DIVISION
Incorporated Place	○	Incorporated Place
Unified School District	○	Unified School District
Secondary School District	○	Secondary School District
Elementary School District	○	Elementary School District
Interstate and Limited Access Highway	—	Interstate and Limited Access Highway
US Highway or Secondary Road	—	U.S. Highway or Secondary Road
County or Connecting Road	—	County or Connecting Road
Neighborhood Road or City Street	—	Neighborhood Road or City Street
Railroad	—	Railroad
Perennial Stream/Shoreline	—	Perennial Stream/Shoreline
Intermittent Stream/Shoreline	—	Intermittent Stream/Shoreline
Pipeline or Powerline	—	Pipeline or Powerline
Property Line	—	Property Line
River, Lake, or Other Water	—	River, Lake, or Other Water
Military	—	Military
Park/National Park	—	Park/National Park
INSET A	—	INSET A
Outside Jurisdiction	—	Outside Jurisdiction

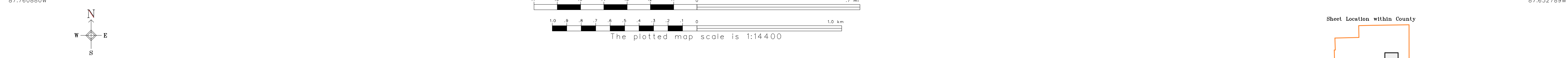
¹ State or County; or their equivalent area for statistical purposes.
² A five-spoked asterisk following a minor civil division name indicates that the minor civil division is coextensive with an incorporated place and has the same name.

School Districts

Code	Name
20760	KANKAKEE SCHOOL DISTRICT 111
26430	MOMENCE COMMUNITY UNIT SCHOOL DISTRICT 1
37140	ST ANNE COMMUNITY HIGH SCHOOL DISTRICT 302
31140	PEMBROKE CONSOLIDATED COMMUNITY SCHOOL DISTRICT 259
37120	ST ANNE CONSOLIDATED COMMUNITY SCHOOL DISTRICT 256

KEY TO LINEAR FEATURE NAMES

1. Cathey 23 (E 7000S Rd)	3. E Sheffield St	5. E Central Ave (E 4000S Rd)
2. N Chicago Ave	4. W Washington St	6. S Moore Ave



ST: Illinois (17)
 COU: Kankakee County (091)

SHEET 17 OF 18 PARENT SHEETS

(SDA03) 02417091017000000000