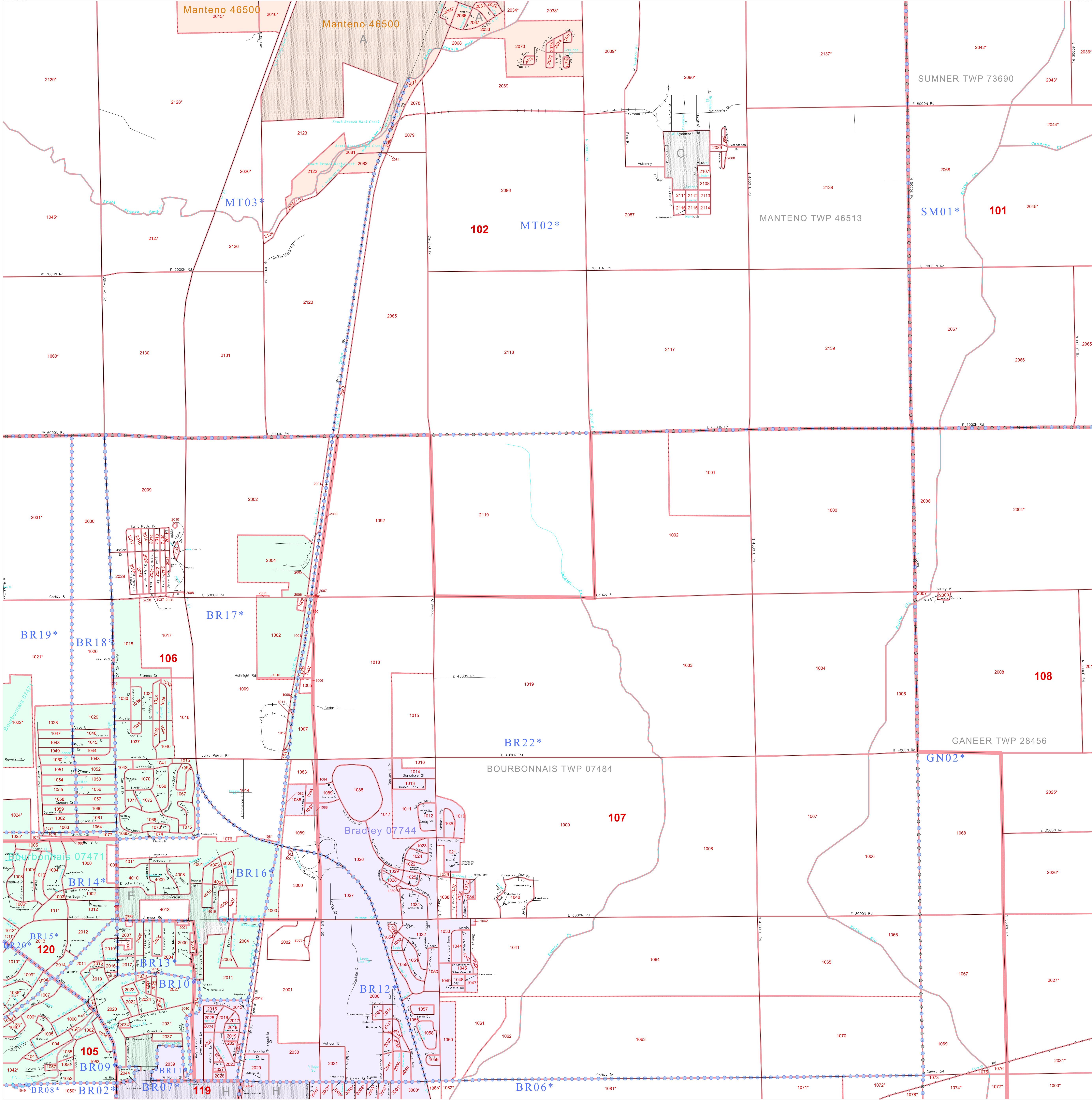


P. L. 94-171 COUNTY BLOCK MAP (CENSUS 2000)

41 245956N
87.888971W

41 245956N
87.757358W



GEOGRAPHIC AREAS LEGEND

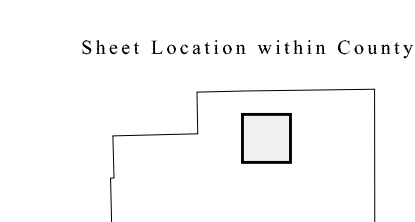
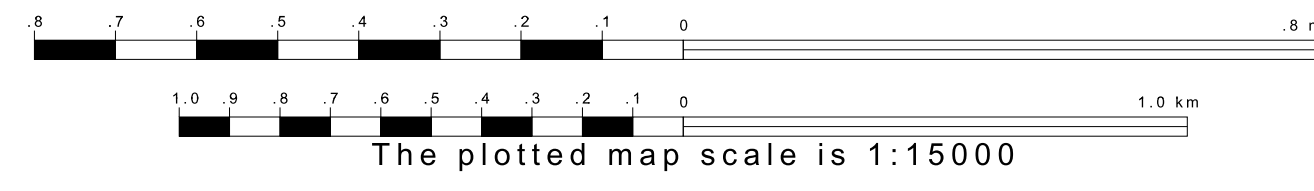
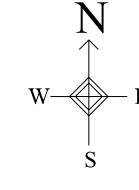
SYMBOL	NAME STYLE
*****	INTERNATIONAL
//////	STATE
■■■■■	COUNTY
■■■■■	MINOR CIVIL DIV. ¹
■	Incorporated Place ²
■	Census Designated Place ²
---	Corporate Offset Boundary
●●●●●	Voting District ³
■	Census Tract
■	BLOCK ³

Military Inset Out Area

1 A "*" following a place name indicates that the place is coterminous with a MCD. A "-" indicates that the place is also a false MCD. In both cases, the MCD name is shown only when it differs from the place name.
 2 A "*" following a VTD code indicates an actual voting district. Its absence indicates that the VTD is a pseudo voting district or no information is available as to its status.
 3 A "*" following a block number indicates that the block number is repeated elsewhere in the block.

41 146455N
87.888971W

41 146455N
87.757358W



Key to Adjacent Sheets

1	2	3
7	8	9
13	14	15

ST: Illinois (17)
COU: Kankakee (091)
SHEET 8 OF 22 PARENT SHEETS



All legal boundaries and names are as of January 1, 2000. The boundaries shown on this map are for Census Bureau statistical data collection and tabulation purposes only; their depiction and designation for statistical purposes does not constitute a determination of jurisdictional authority or rights of ownership or entitlement. U.S. DEPARTMENT OF COMMERCE Economics and Statistics Administration U.S. Census Bureau